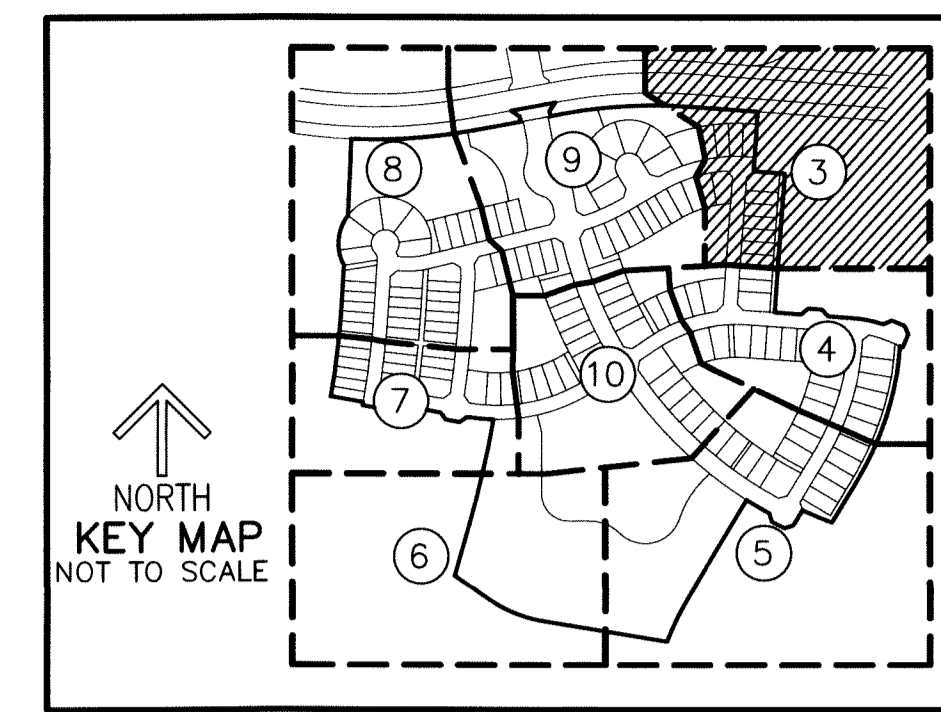


THIS INSTRUMENT PREPARED BY
 DAVID P. LINDLEY
 OF
CAULFIELD and WHEELER, INC.
 SURVEYORS - ENGINEERS - PLANNERS
 7900 GLADES ROAD, SUITE 100
 BOCA RATON, FLORIDA 33434 - (561)392-1991
 CERTIFICATE OF AUTHORIZATION NO. LB3591

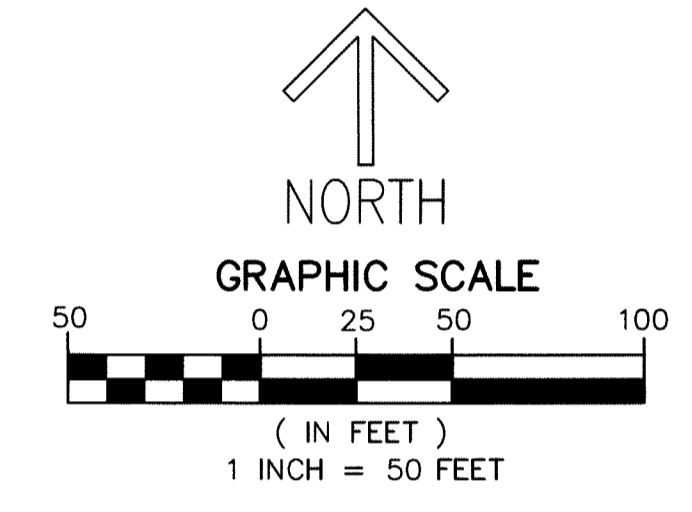
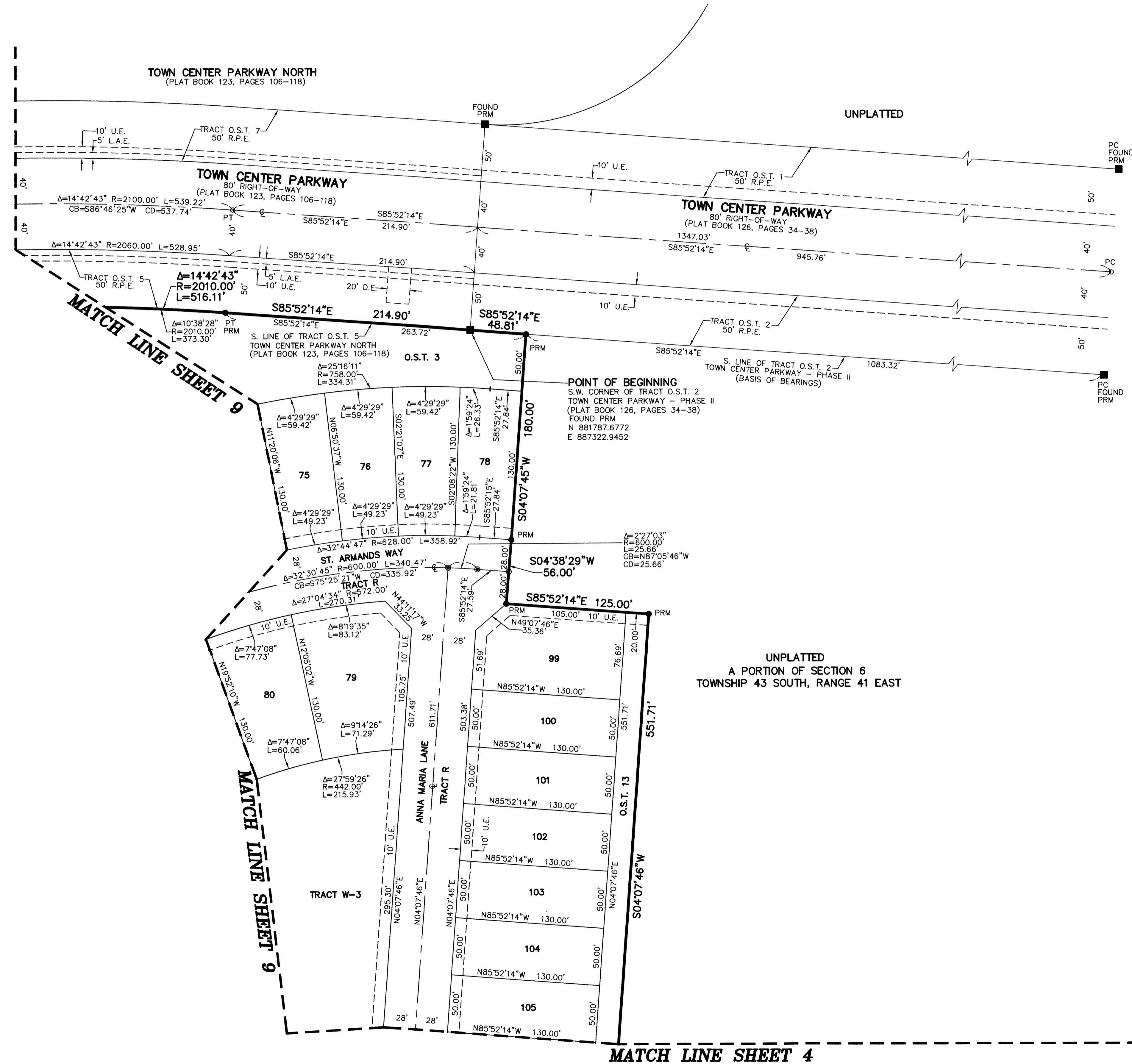
CRESSWIND PALM BEACH PHASE 1

BEING A REPLAT OF ALL OF TRACT W.M.T. 3 AND A PORTION OF TRACT OS-5,
 TOWN CENTER PARKWAY NORTH, AS RECORDED IN PLAT BOOK 123, PAGES 106 THROUGH 118
 OF THE PUBLIC RECORDS OF PALM BEACH COUNTY, FLORIDA,
 TOGETHER WITH A PORTION OF SECTION 6, TOWNSHIP 43 SOUTH, RANGE 41 EAST,
 AND SECTION 1, TOWNSHIP 43 SOUTH, RANGE 40 EAST,
 CITY OF WESTLAKE, PALM BEACH COUNTY FLORIDA



98

SHEET 3 OF 10



NOTES
COORDINATES, BEARINGS AND DISTANCES
 COORDINATES SHOWN ARE GRID
 DATUM = NAD 83 (2007 ADJUSTMENT)
 ZONE = FLORIDA EAST
 LINEAR UNIT = US SURVEY FEET
 COORDINATE SYSTEM 1983 STATE PLANE
 TRANSVERSE MERCATOR PROJECTION
 ALL DISTANCES ARE GROUND
 SCALE FACTOR = 1.0000017
 GROUND DISTANCE X SCALE FACTOR = GRID DISTANCE
 BEARINGS AS SHOWN HEREON ARE GRID DATUM,
 NAD 83 (2007 ADJUSTMENT), FLORIDA EAST ZONE.

LEGEND/ABBREVIATIONS

- CL - CENTERLINE
- Δ - DELTA (CENTRAL ANGLE)
- BLVD. - BOULEVARD
- CB - CHORD BEARING
- CD - CHORD DISTANCE
- DE - DRAINAGE EASEMENT
- E - EASTING (WHEN USED WITH COORDINATES)
- L - ARC LENGTH
- LMAE - LAKE MAINTENANCE ACCESS EASEMENT
- LAE - LIMITED ACCESS EASEMENT
- LB - LICENSED BUSINESS
- N - NORTHING (WHEN USED WITH COORDINATES)
- (NR) - NON-RADIAL LINE
- O.S.T. - OPEN SPACE TRACT
- PC - POINT OF CURVATURE
- PCC - POINT OF COMPOUND CURVATURE
- PNT - POINT OF NON-TANGENCY
- PRC - POINT OF REVERSE CURVATURE
- PT - POINT OF TANGENCY
- R - RADIUS
- RPE - RURAL PARKWAY EASEMENT
- U.E. - UTILITY EASEMENT
- ⊙ - PERMANENT CONTROL POINT
- - SET PERMANENT REFERENCE MONUMENT
 SET 5/8" IRON ROD WITH CAP
 STAMPED "C&W PRM LB3591"
- - FOUND PERMANENT REFERENCE MONUMENT
 4" x 4" x 24" CONCRETE MONUMENT WITH
 DISK STAMPED "PRM LB7768"

UNPLATTED
 A PORTION OF SECTION 6
 TOWNSHIP 43 SOUTH, RANGE 41 EAST